

LG QuantumFlux™ Pressurized UF Membrane

Technical Service Bulletin 608

UF System Design

Although LG Chem does not typically supply the UF system, it is critical to have a properly designed system, capable of following LG Chem recommended operating process. Please refer to the LG Chem Technical Service Bulletins (TSB's) for system design recommendations.

Key Operating Parameter Definitions

- **Filtrate flow rate**

Filtrate flow rate is the rate of the water that passes through the membrane from the feed side to the filtrate side. It is a function of the pressure, and the quality of the feed water. The filtrate flow rate should be set in according to LG Chem's recommended membrane flux.

- **Filtrate flux**

Filtrate flux is the volume of filtered water passing through a unit of membrane surface area in a specified period of time. It is commonly expressed as l/mh (Liters of filtered water/m² of surface area/hour of filtration time), gfd (gallons of filtered water/ft² of surface area/day of filtration time), or m/d (m³ of filtered water/m² of surface area/day of filtration time). Appropriate flux selection is one of the most important design and operating considerations. The filtrate flux should be set according to LG Chem's recommendation for your specific application. The flux may be increased or decreased during operation to account for changes in feed water quality, temperature or product water demand.

- **Transmembrane Pressure**

Transmembrane Pressure (TMP) is the pressure difference between the feed and filtrate sides of the membrane. It is commonly measured in units of bar, psi, or kPa. TMP is the driving force for filtration. Most ultrafiltration systems operate at a constant flow rate during filtration. As filtration occurs, solids deposited on the membrane surface will create resistance to filtration causing the TMP to increase. Proper design filtrate flux is necessary to control the rate of TMP increase. Physical and chemical cleaning are required to remove accumulated fouling and reduce TMP. The maximum allowable TMP is 0.15 MPa (22.1 psi).

- **Normalized permeability**

Normalized permeability, or specific flux, is defined as filtrate flux per applied transmembrane pressure (differential pressure) corrected to a specified temperature, typically 20 or 25 degrees Celsius. It is commonly measured in units of l/mh/bar or gfd/psi @ 20°C. Normalized permeability is one of the most important parameters used to measure the performance of the membrane system. In a properly designed and operated UF system, the normalized permeability will decrease slowly between cleanings and will return to previous levels after cleaning such that it remains essentially constant over long-term operation.

- **Filtration cycle duration**

The filtration cycle duration is dependent on the quality of the feed water. An appropriate design value should be selected per LG Chem's recommendation. The actual time should be set by testing at site and adjusted according to the changes of the feed water quality during the operation. Typical filtration cycle duration is 20-60 minutes.

To facilitate operation explanation, the following typical P&IDs are provided.

LG QuantumFlux™ Pressurized Membrane

Technical Service Bulletin 608

UF System Design

Feedwater Limiting Conditions

Parameter	Allowed Range	Comments
pH	1 – 10 (NIPS) 1-14 (TIPS)	1—14 allowed during cleaning (TIPS)
Particle Size	≤0.5 mm, ≤0.12 mm for seawater feeds, no sharp particles allowed	To prevent mechanical damage
Oil	≤0.5 mg/L (NIPS) ≤2 mg/L (TIPS)	To prevent membrane fouling
Turbidity	<300 NTU	Contact the sales team if your operating parameters exceed the allowed

**CAUTION**

This is not an extensive list and does not constitute the only conditions for a valid warranty claim.
Refer to your project specific warranty document for all conditions that apply to your warranty

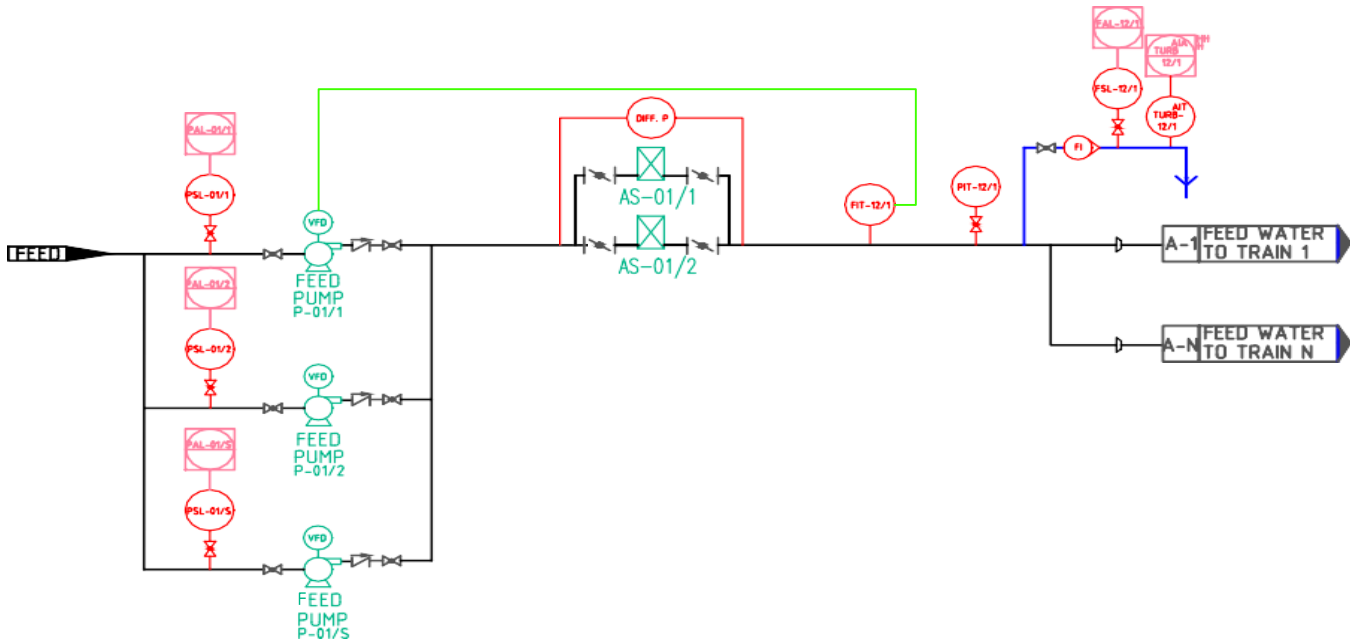
The information and data contained herein are deemed to be accurate and reliable and are offered in good faith, but without guarantee of performance. LG Chem assumes no liability for results obtained or damages incurred through the application of the information contained herein. Customer is responsible for determining whether the products

and information presented are appropriate for the customer's use and for ensuring that customer's workplace and disposal practices are in compliance with applicable laws and other governmental enactments. Specifications subject to change without notice. QuantumFlux is the Trademark of LG Chem. All rights reserved. © LG Chem, Ltd

The following P&I Diagrams refer to QuantumFlux Pxxxx-D modules

FEED PUMPING CENTER
TO ALL TRAINS

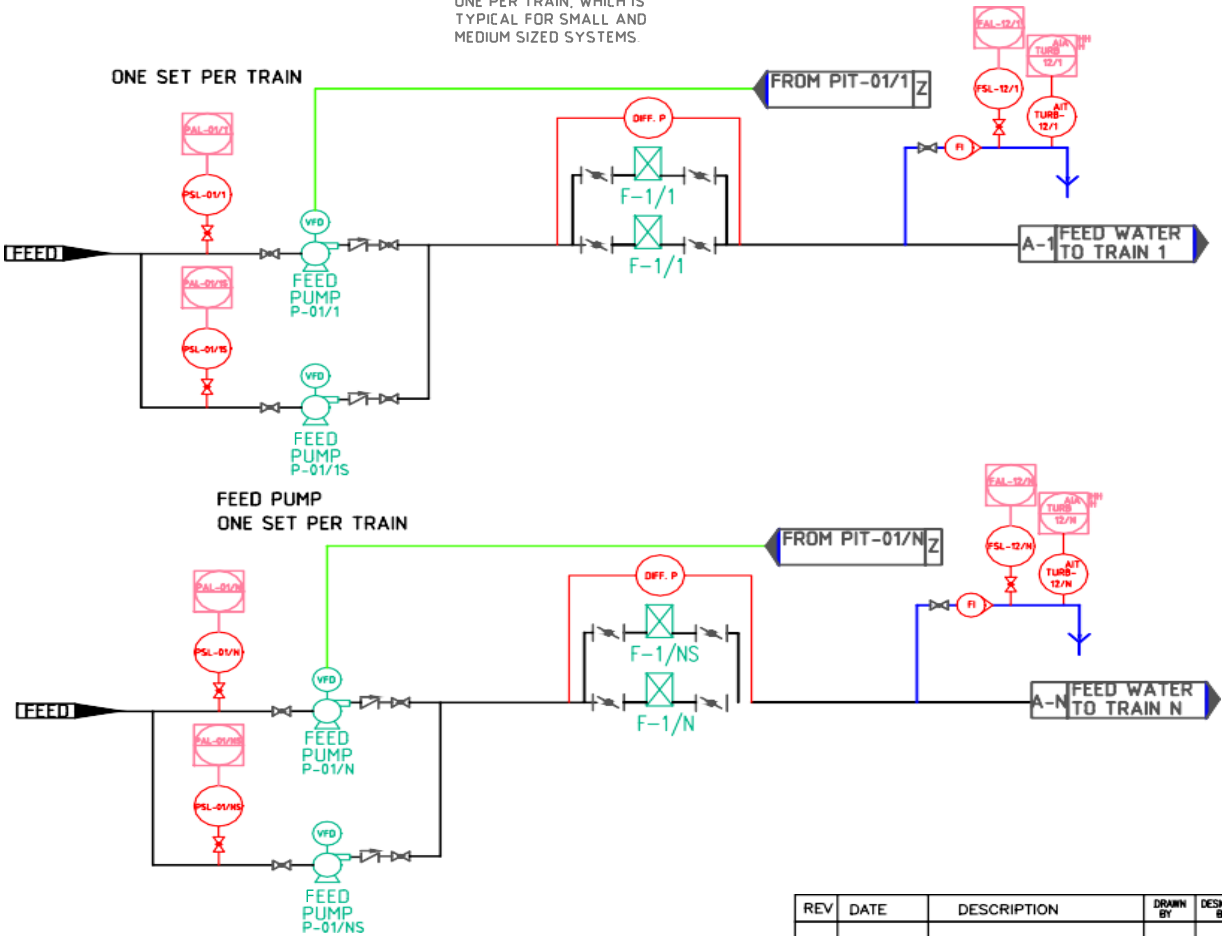
FEED PUMPS ARRANGED IN
PARALLEL WITH DISCHARGE
TO FEED WATER HEADER,
WHICH IS TYPICAL FOR
LARGER SYSTEMS.



OR

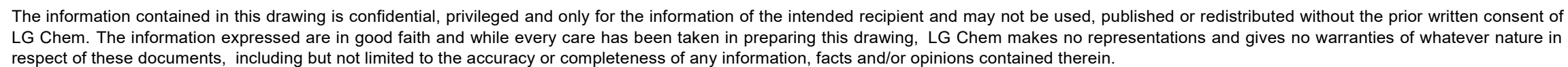
ONE FEED PUMP PER TRAIN

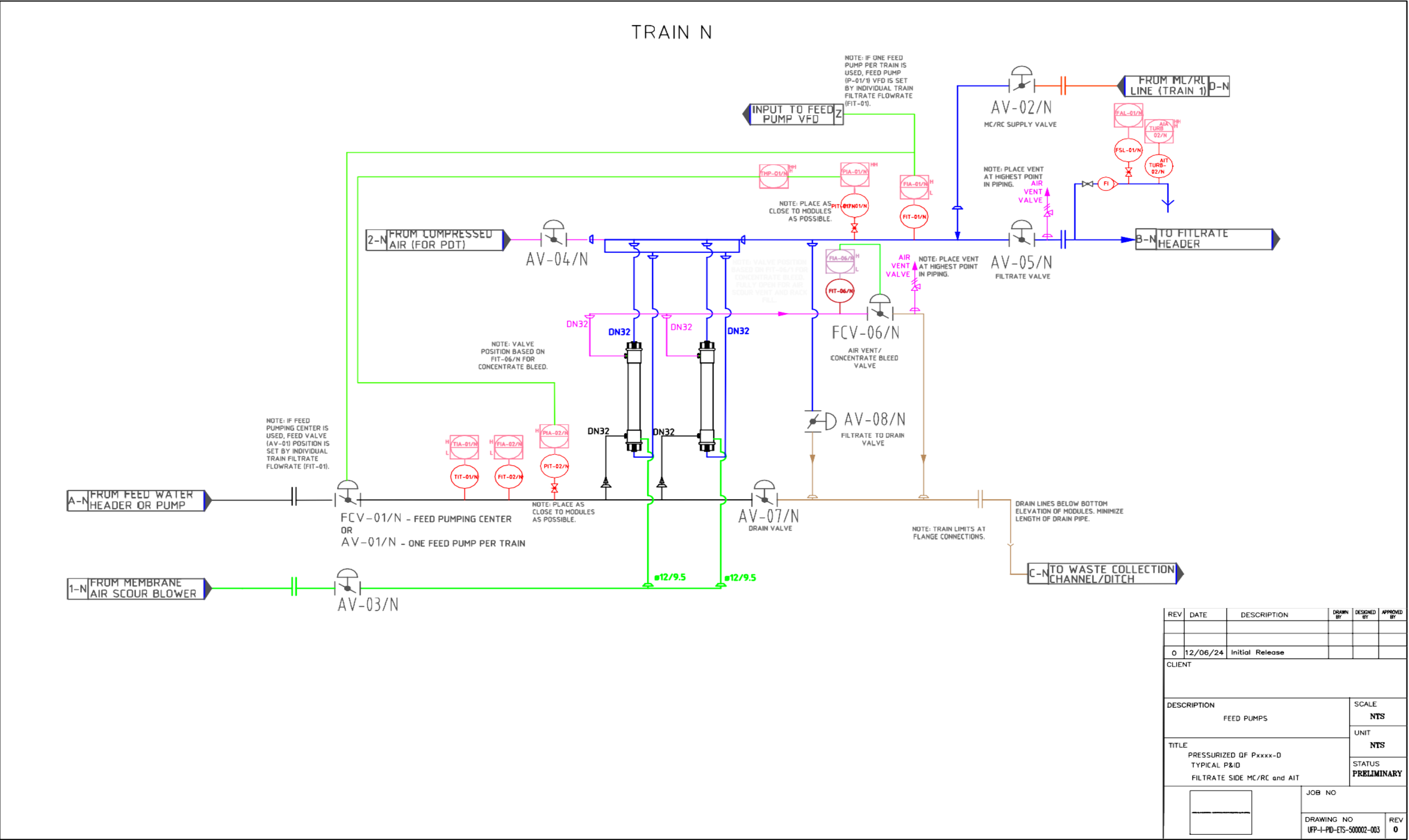
FEED PUMPS ARRANGED AS
ONE PER TRAIN, WHICH IS
TYPICAL FOR SMALL AND
MEDIUM SIZED SYSTEMS.



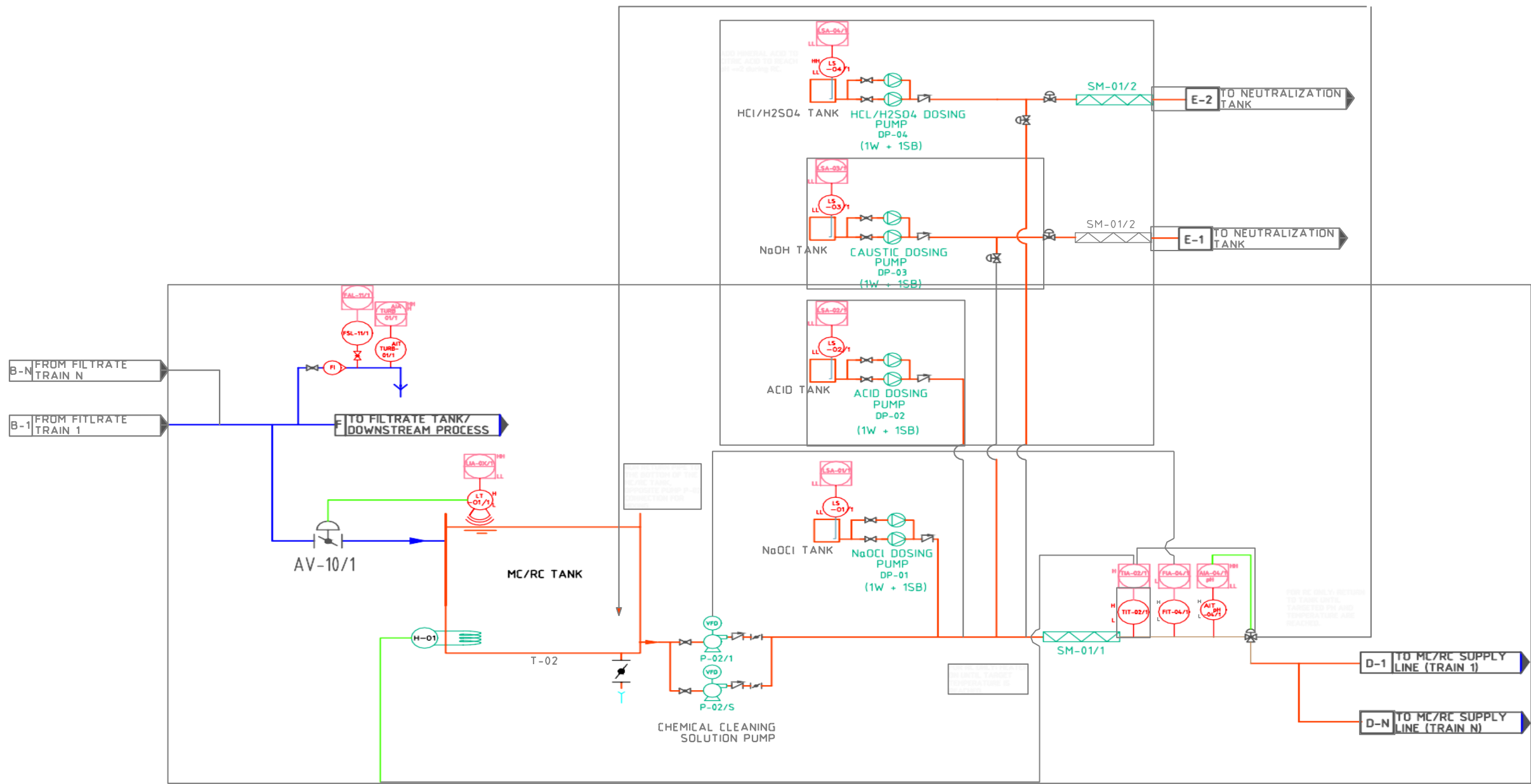
REV	DATE	DESCRIPTION	DRAWN BY	DESIGNED BY	APPROVED BY
0	12/06/24	Initial Release			
CLIENT					
DESCRIPTION				SCALE	
FEED PUMPS				NTS	
TITLE				UNIT	
PRESSURIZED QF Pxxxx-D				NTS	
TYPICAL P&ID				STATUS	
FILTRATE SIDE MC/RC and AIT				PRELIMINARY	
<div></div>			JOB NO		
<div></div>			DRAWING NO		REV
			UFP-I-PID-ETS-500002-001		0

The information contained in this drawing is confidential, privileged and only for the information of the intended recipient and may not be used, published or redistributed without the prior written consent of LG Chem. The information expressed are in good faith and while every care has been taken in preparing this drawing, LG Chem makes no representations and gives no warranties of whatever nature in respect of these documents, including but not limited to the accuracy or completeness of any information, facts and/or opinions contained therein.



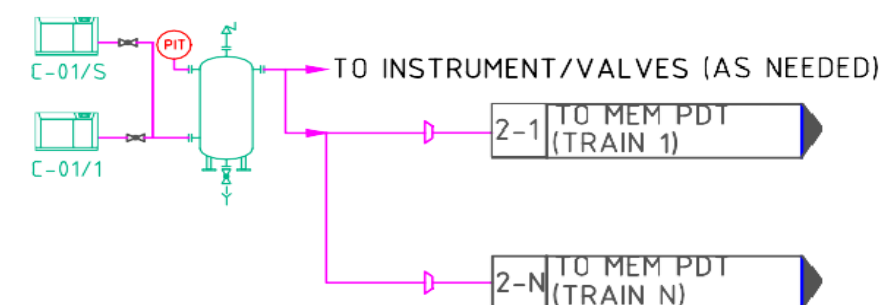
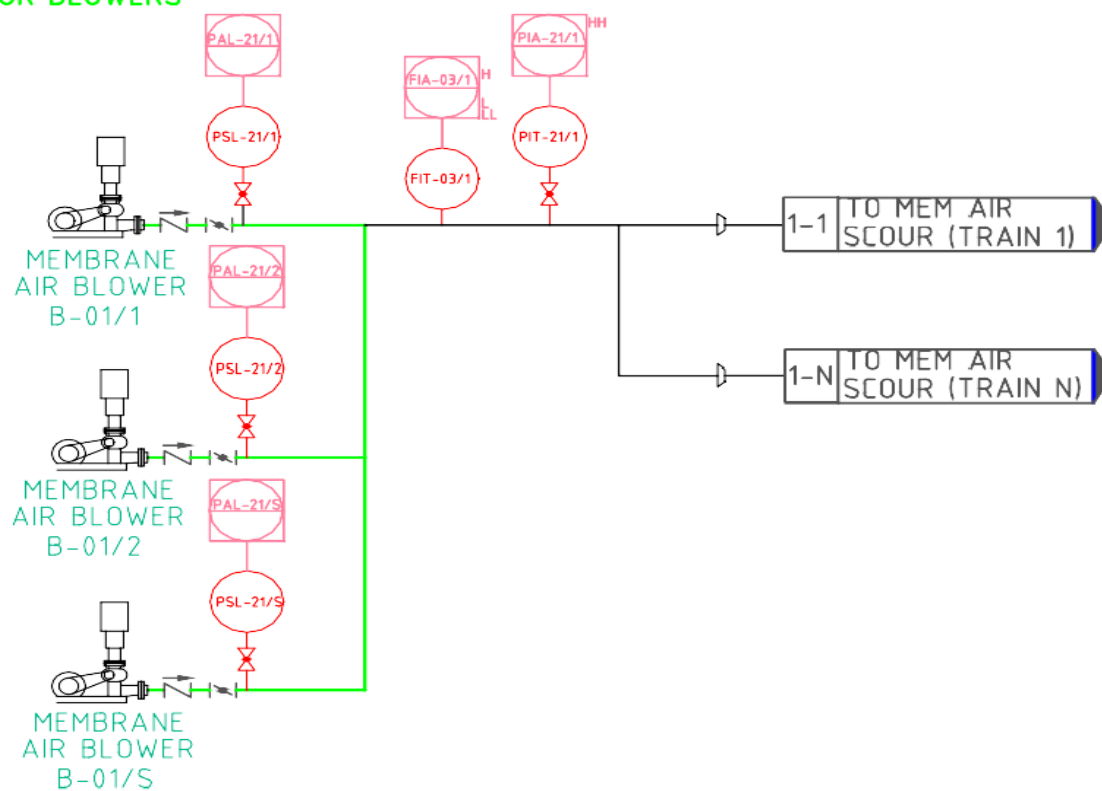


The information contained in this drawing is confidential, privileged and only for the information of the intended recipient and may not be used, published or redistributed without the prior written consent of LG Chem. The information expressed are in good faith and while every care has been taken in preparing this drawing, LG Chem makes no representations and gives no warranties of whatever nature in respect of these documents, including but not limited to the accuracy or completeness of any information, facts and/or opinions contained therein.



REV	DATE	DESCRIPTION	DRAWN BY	DESIGNED BY	APPROVED BY
0	12/06/24	Initial Release			
CLIENT					
DESCRIPTION				SCALE	
FEED PUMPS				NTS	
				UNIT	
				NTS	
TITLE				STATUS	
PRESSURIZED QF Pxxxx-D				PRELIMINARY	
TYPICAL P&ID					
FILTRATE SIDE MC/RC and AIT					
			JOB NO		
			DRAWING NO	REV	
			UFP-I-PID-ETS-500002-004	0	

The information contained in this drawing is confidential, privileged and only for the information of the intended recipient and may not be used, published or redistributed without the prior written consent of LG Chem. The information expressed are in good faith and while every care has been taken in preparing this drawing, LG Chem makes no representations and gives no warranties of whatever nature in respect of these documents, including but not limited to the accuracy or completeness of any information, facts and/or opinions contained therein.



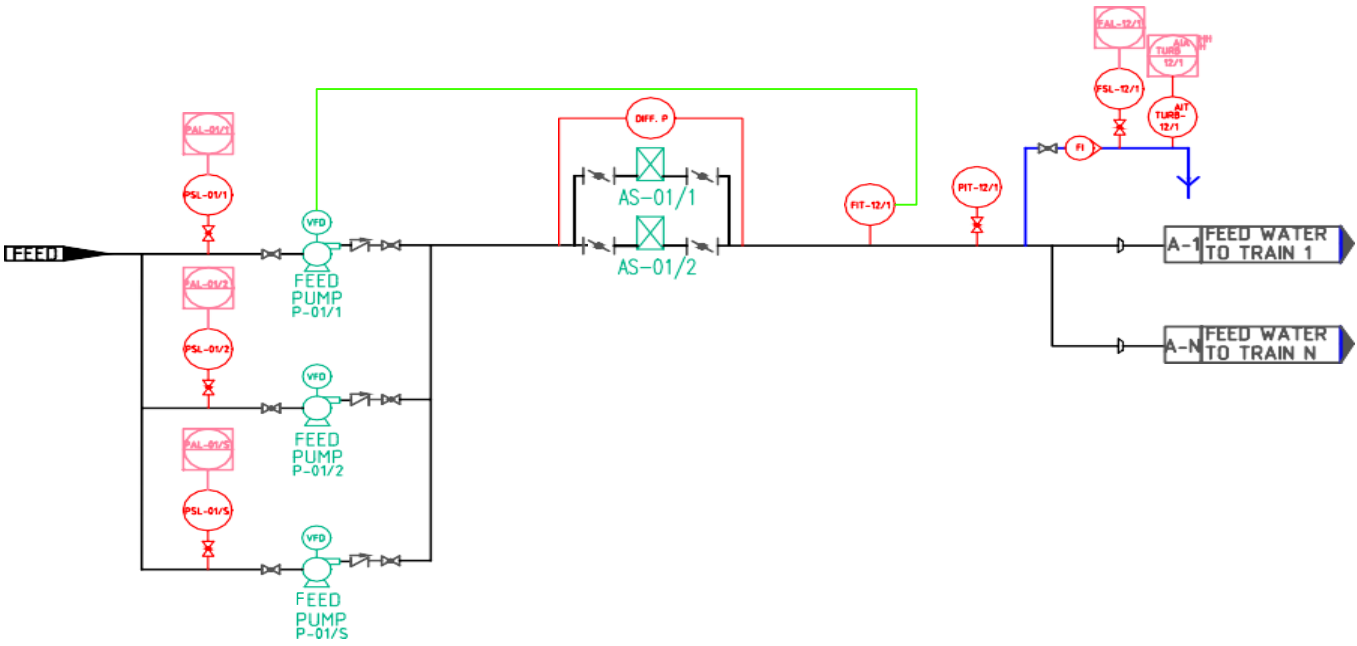
REV	DATE	DESCRIPTION	DRAWN BY	DESIGNED BY	APPROV BY
0	12/06/24	Initial Release			
CLIENT					
DESCRIPTION FEED PUMPS				SCALE NTS	
				UNIT NTS	
TITLE PRESSURIZED QF Pxxxx-D TYPICAL P&ID FILTRATE SIDE MC/RC and AIT				STATUS PRELIMINARY	
<div style="border: 1px solid black; width: 150px; height: 100px; margin: 0 auto;"></div>			JOB NO		
			DRAWING NO UFP-I-I-PID-ETS-500002-005		

www.lqwatersolutions.com

The following P&I Diagrams refer to QuantumFlux Pxxxx-S modules

FEED PUMPING CENTER
TO ALL TRAINS

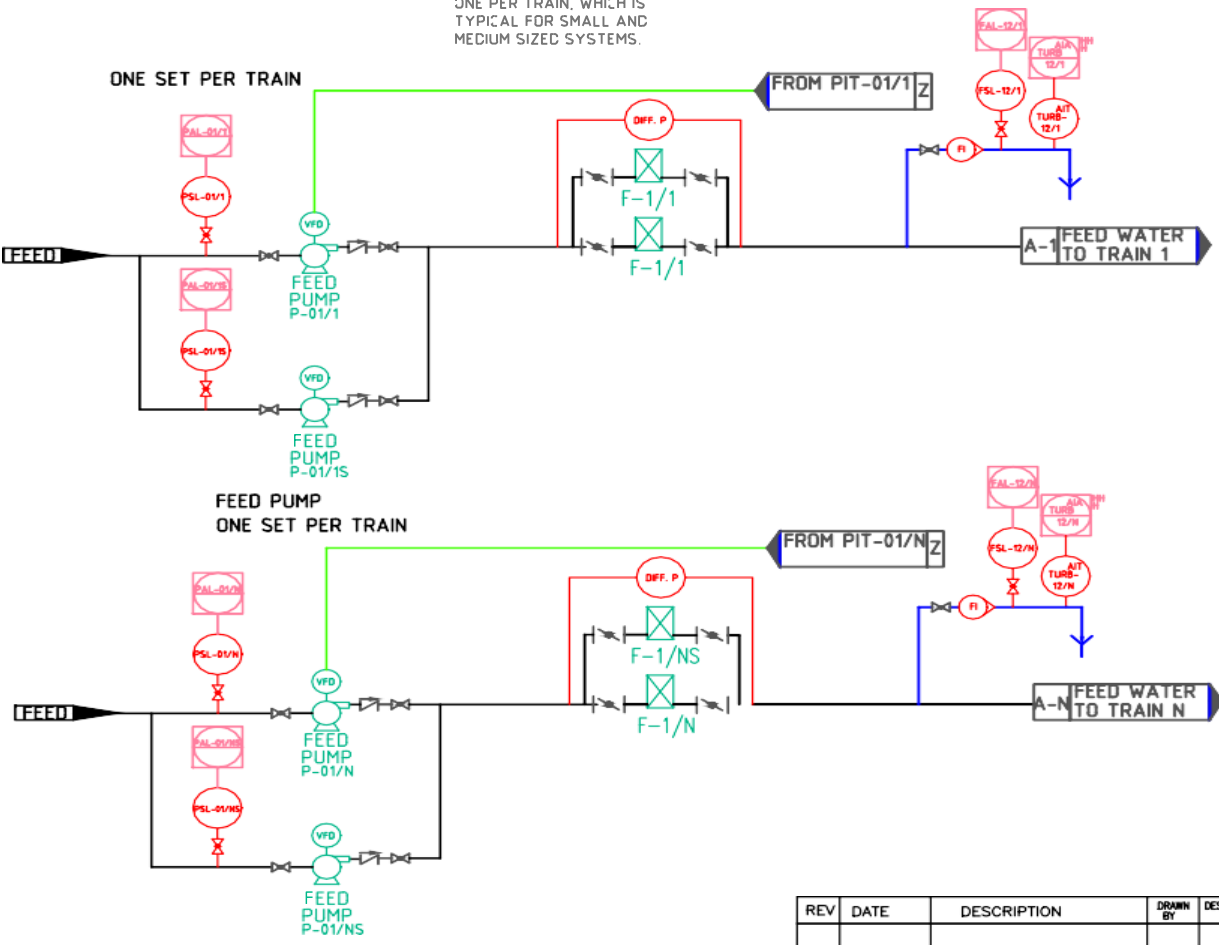
FEED PUMPS ARRANGED IN
PARALLEL WITH DISCHARGE
TO FEED WATER HEADER,
WHICH IS TYPICAL FOR
LARGER SYSTEMS.



OR

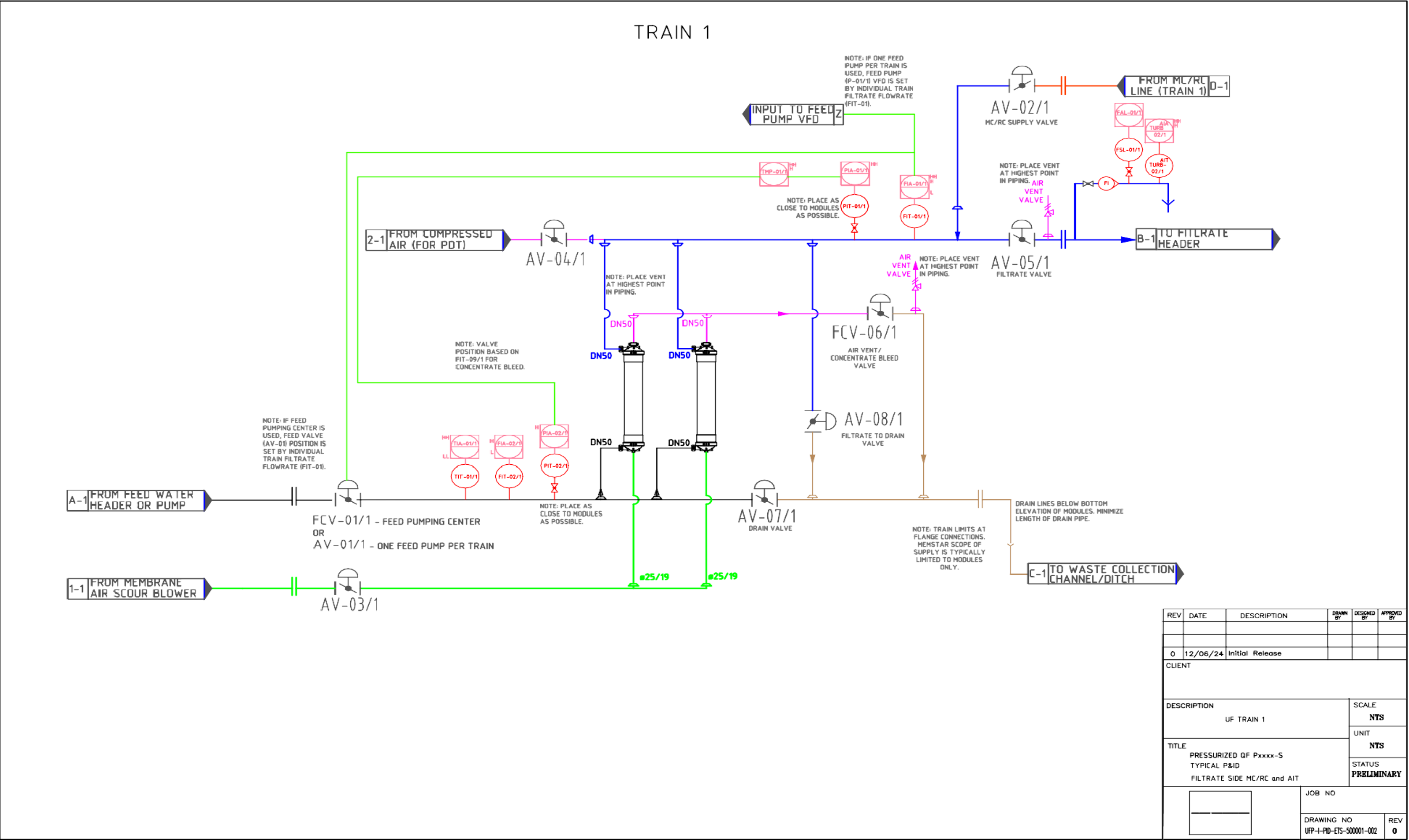
ONE FEED PUMP PER TRAIN

FEED PUMPS ARRANGED AS
ONE PER TRAIN, WHICH IS
TYPICAL FOR SMALL AND
MEDIUM SIZED SYSTEMS.

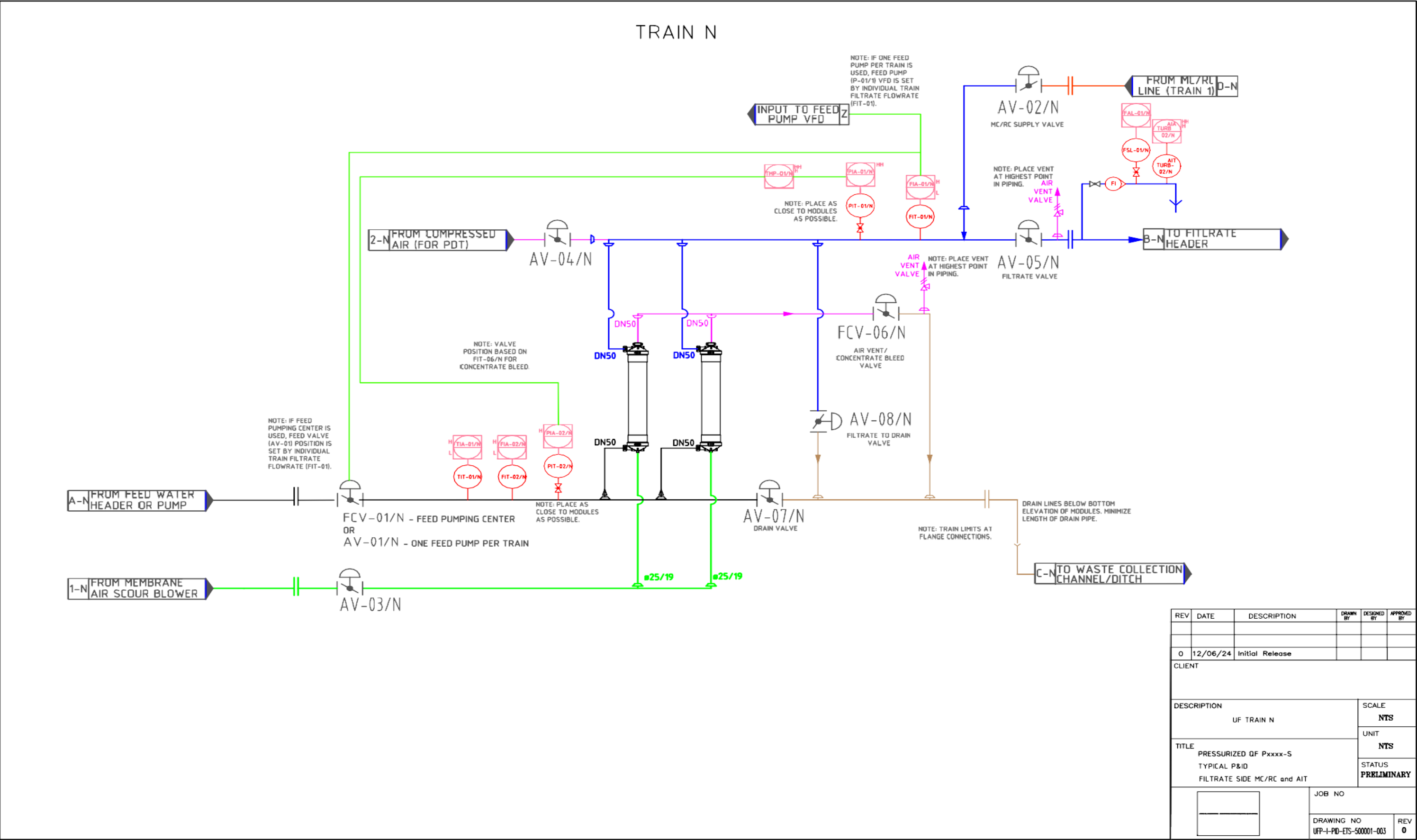


REV	DATE	DESCRIPTION	DRAWN BY	DESIGNED BY	APPROVED BY
0	12/06/24	Initial Release			
CLIENT					
DESCRIPTION			SCALE		
FEED PUMPS			NTS		
TITLE			UNIT		
PRESSURIZED OF Pxxxx-S			NTS		
TYPICAL P&ID			STATUS		
FILTRATE SIDE MC/RC and AIT			PRELIMINARY		
			JOB NO		
			DRAWING NO		REV
			UFP-I-PID-ETS-500001-001		0

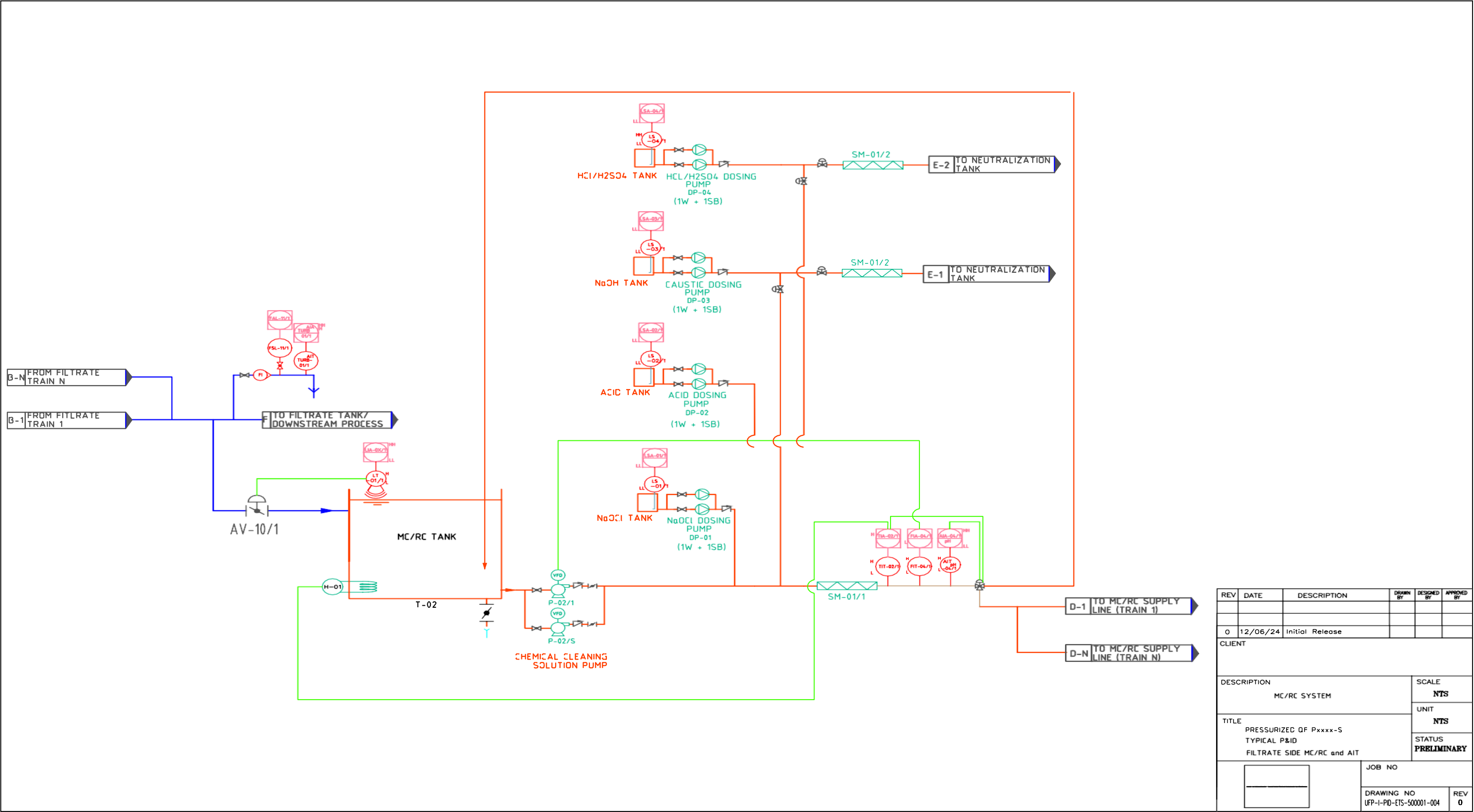
The information contained in this drawing is confidential, privileged and only for the information of the intended recipient and may not be used, published or redistributed without the prior written consent of LG Chem. The information expressed are in good faith and while every care has been taken in preparing this drawing, LG Chem makes no representations and gives no warranties of whatever nature in respect of these documents, including but not limited to the accuracy or completeness of any information, facts and/or opinions contained therein.



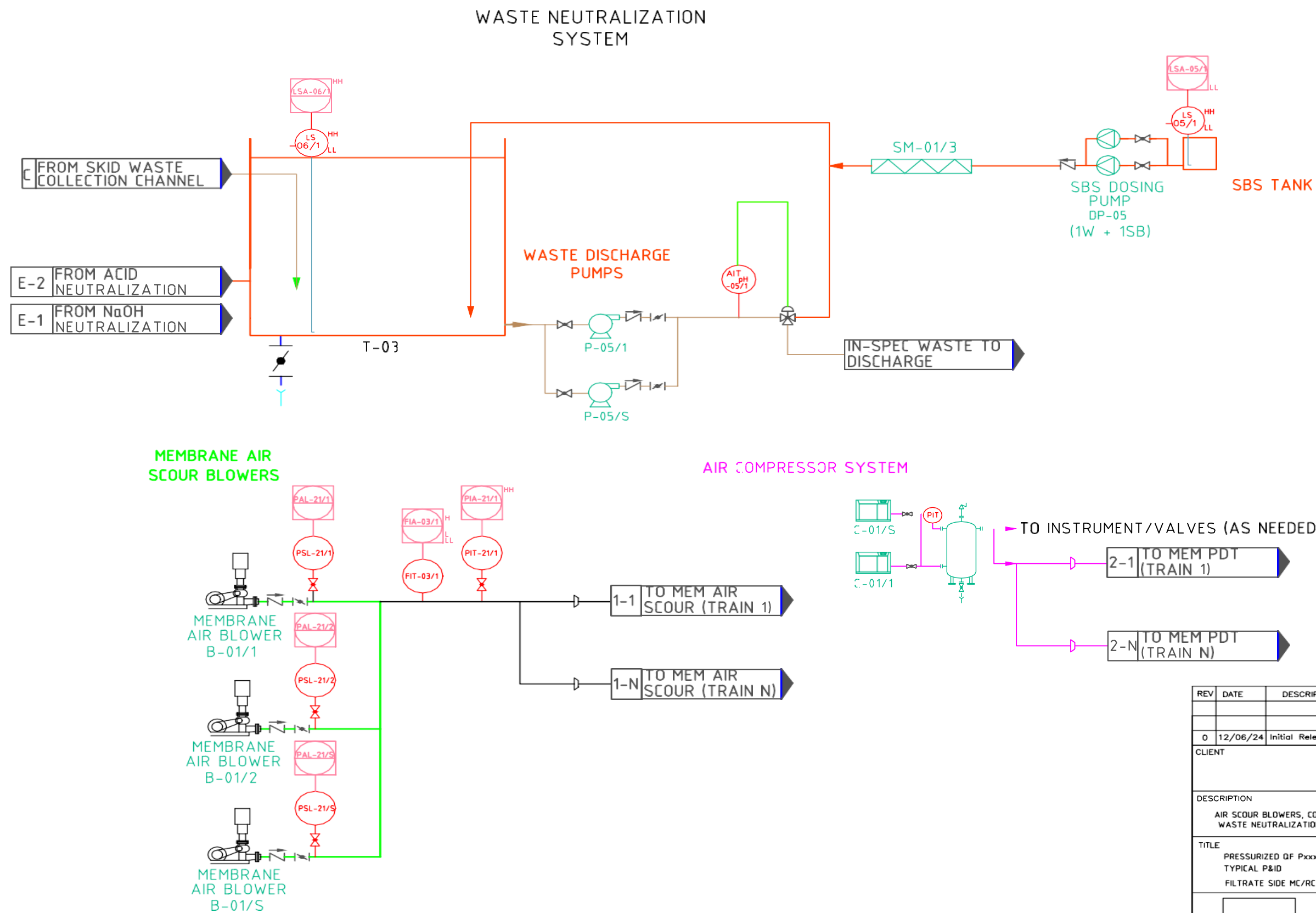
The information contained in this drawing is confidential, privileged and only for the information of the intended recipient and may not be used, published or redistributed without the prior written consent of LG Chem. The information expressed are in good faith and while every care has been taken in preparing this drawing, LG Chem makes no representations and gives no warranties of whatever nature in respect of these documents, including but not limited to the accuracy or completeness of any information, facts and/or opinions contained therein.



The information contained in this drawing is confidential, privileged and only for the information of the intended recipient and may not be used, published or redistributed without the prior written consent of LG Chem. The information expressed are in good faith and while every care has been taken in preparing this drawing, LG Chem makes no representations and gives no warranties of whatever nature in respect of these documents, including but not limited to the accuracy or completeness of any information, facts and/or opinions contained therein.



The information contained in this drawing is confidential, privileged and only for the information of the intended recipient and may not be used, published or redistributed without the prior written consent of LG Chem. The information expressed are in good faith and while every care has been taken in preparing this drawing, LG Chem makes no representations and gives no warranties of whatever nature in respect of these documents, including but not limited to the accuracy or completeness of any information, facts and/or opinions contained therein.



REV	DATE	DESCRIPTION	DRAWN BY	DESIGNED BY	APPROVED BY
0	12/06/24	Initial Release			
CLIENT					
DESCRIPTION			SCALE		
AIR SCOUR BLOWERS, COMPRESSOR WASTE NEUTRALIZATION SYSTEM			NTS		
TITLE			UNIT		
PRESSURIZED QF Pxxxx-S TYPICAL P&ID FILTRATE SIDE MC/RC and AIT			NTS		
			STATUS		
			PRELIMINARY		
			JOB NO		
			DRAWING NO		REV
			UFP-I-PD-ETS-500001-005		0

The information contained in this drawing is confidential, privileged and only for the information of the intended recipient and may not be used, published or redistributed without the prior written consent of LG Chem. The information expressed are in good faith and while every care has been taken in preparing this drawing, LG Chem makes no representations and gives no warranties of whatever nature in respect of these documents, including but not limited to the accuracy or completeness of any information, facts and/or opinions contained therein.